

EASY ASSEMBLY AND OPERATION INSTRUCTIONS

MR-125150 Soul Stealer



Please follow the step by step guide and enjoy your Soul Stealer!

CARE AND STORAGE INSTRUCTIONS

For best performance operate your item indoors. When not in use, store this product in its original packing. Keep away from heat and moisture.

WARNING

This item is not a toy and should be used for decoration only. This item contains small parts that can be a choking hazard. Keep all plastic and wire parts away from children.

1. Please use the adapter supplied by manufacturer.
2. Please assemble item according to instructions. Connect all wires according to matching color.
3. Children should be supervised by adults. Item should not be grabbed, as it becomes a tipping hazard. Keep all objects away from the adapter, as it heats up during operation.

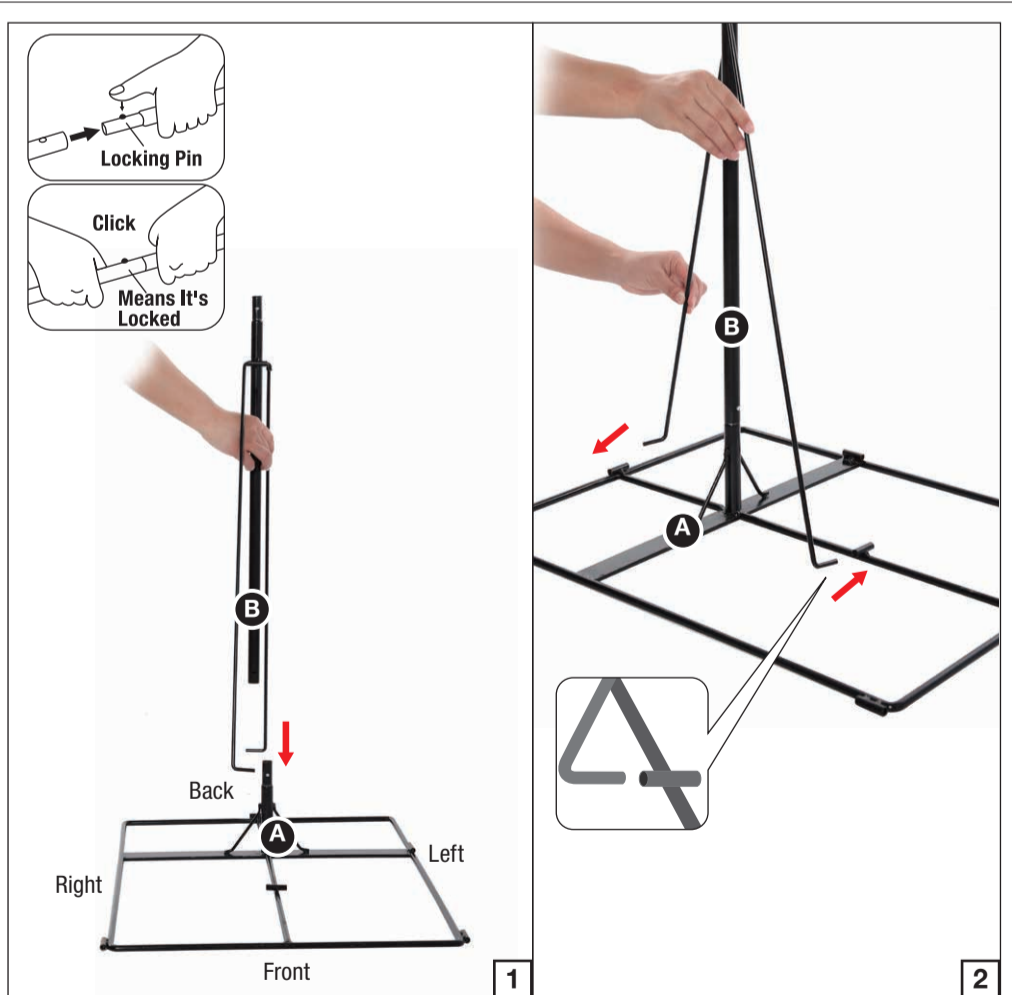
Please read all instructions carefully before assembling. Save this instruction sheet for future reference.

PARTS LIST

- A. Base x 1
 - B. Lower Pole x 1
 - C. Upper Pole x 1
 - D. Strut x 1
 - E. Costume x 1
 - F. Hip Hoop x 1
 - G. Body Frame x 1
 - H. Left Arm x 1
 - I. Right Arm x 1
 - J. Right Hand and Book x 1
 - K. Back Frame x 1
 - L. Head x 1
 - M. Lower Tombstone x 1
 - N. Short Poles x 2
 - O. Long Poles x 2
 - P. Upper Right Tombstone x 1
 - Q. Upper Left Tombstone x 1
 - R. Fog Hose x 1
 - S. Fog Machine Adapter x 1
 - T. Step Pad x 1
 - U. Universal Adapter (Included) x 1
- Input: 100 - 240VAC 50/60Hz
Output: 5.9V 3.0A



BEFORE ASSEMBLING, REMOVE ALL THE ABOVE PARTS FROM BOX. IF ANY PART IS MISSING, PLEASE CONTACT CUSTOMER SERVICE AT SUPPORT@MORRISCOSTUMES.COM, OR BY PHONE 704-332-3304. IN YOUR EMAIL INQUIRY, PLEASE INCLUDE: YOUR ORDER NUMBER, WHO YOU BOUGHT IT FROM, AND WHAT SPECIFICALLY IS WRONG. THANK YOU.



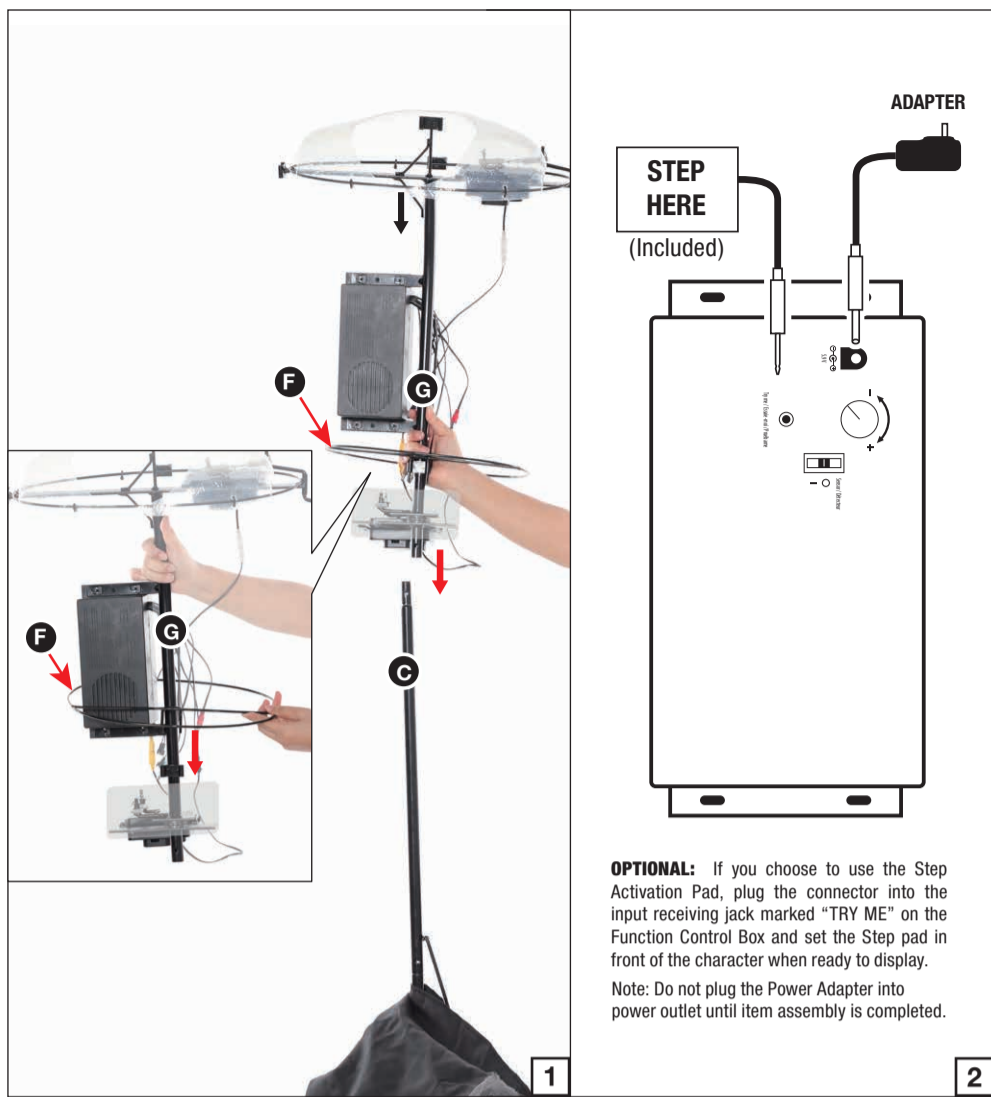
STEP 1

Connect the (B) Lower Pole to the (A) Base using the quick connect push button and pre-drilled hole as shown in Figure 1.
Then slide the struts from the (B) Lower Pole into the housings on the (A) Base as shown in Figure 2.



STEP 2

Connect the (C) Upper Pole to the (B) Lower Pole using the quick connect push button and pre-drilled hole as shown in Figure 1.
Then slide the (D) Strut into the housings on the (A) Base and (C) Upper Pole as shown in Figure 2.
Slip the (E) Costume over the (B, C) Poles and let it rest on the (A) Base as shown in Figure 3.



OPTIONAL: If you choose to use the Step Activation Pad, plug the connector into the input receiving jack marked "TRY ME" on the Function Control Box and set the Step pad in front of the character when ready to display.
 Note: Do not plug the Power Adapter into power outlet until item assembly is completed.

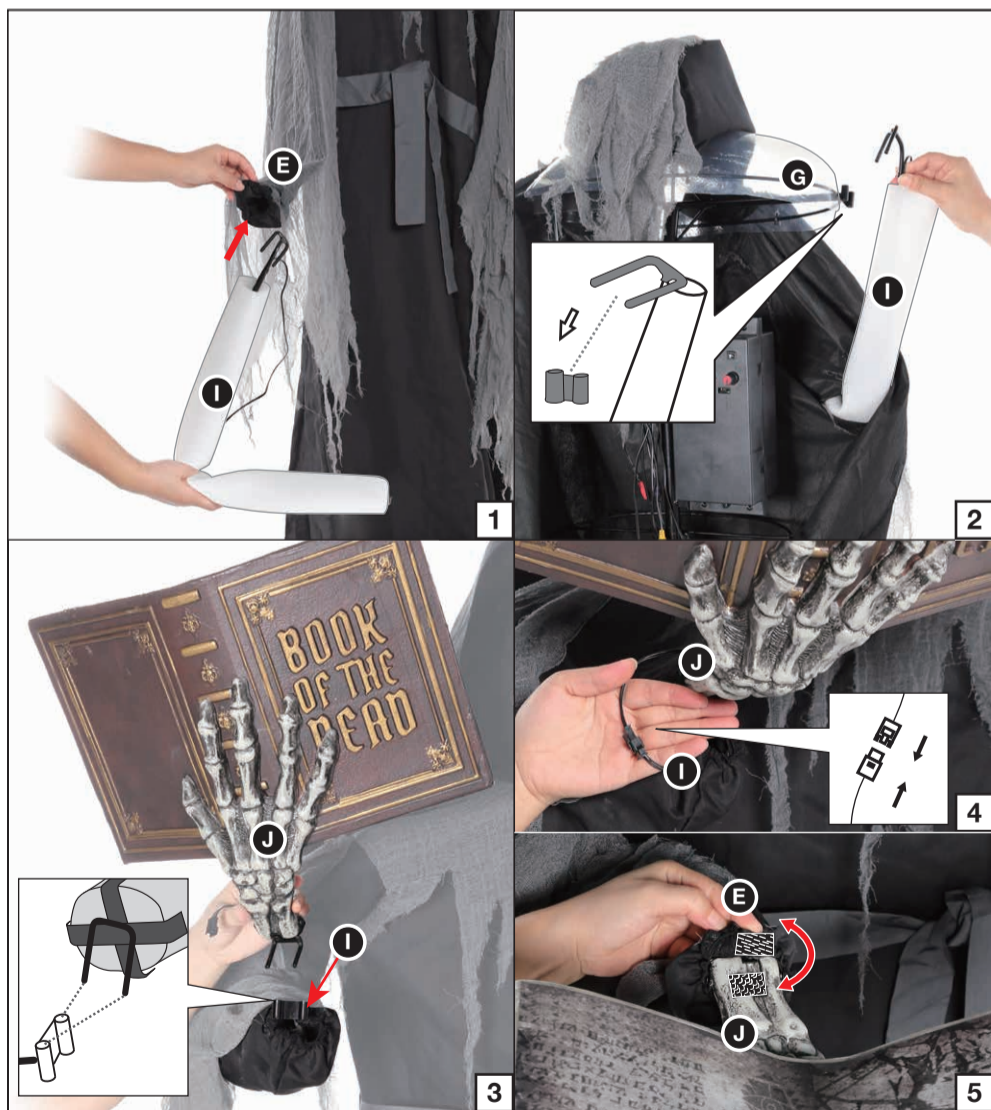
STEP 3

Slide the forked hook of the (F) Hip Hoop into the housing on the (G) Body Frame. Then connect the (G) Body Frame to the (C) Upper Pole using the quick connect push button and pre-drilled hole as shown in Figure 1.



STEP 4

Bring the (E) Costume up over the shoulder area of the (G) Body Frame as shown in Figure 1. Slide the (H) Left Arm up the left sleeve of the (E) Costume as shown in Figure 2. Then set the forked hook of the (H) Left Arm into the housing available on the left side of the (G) Body Frame as shown in Figure 3. Attach the left sleeve of the (E) Costume to the hand of the (H) Left Arm using the hook and loop closure as shown in Figure 4.



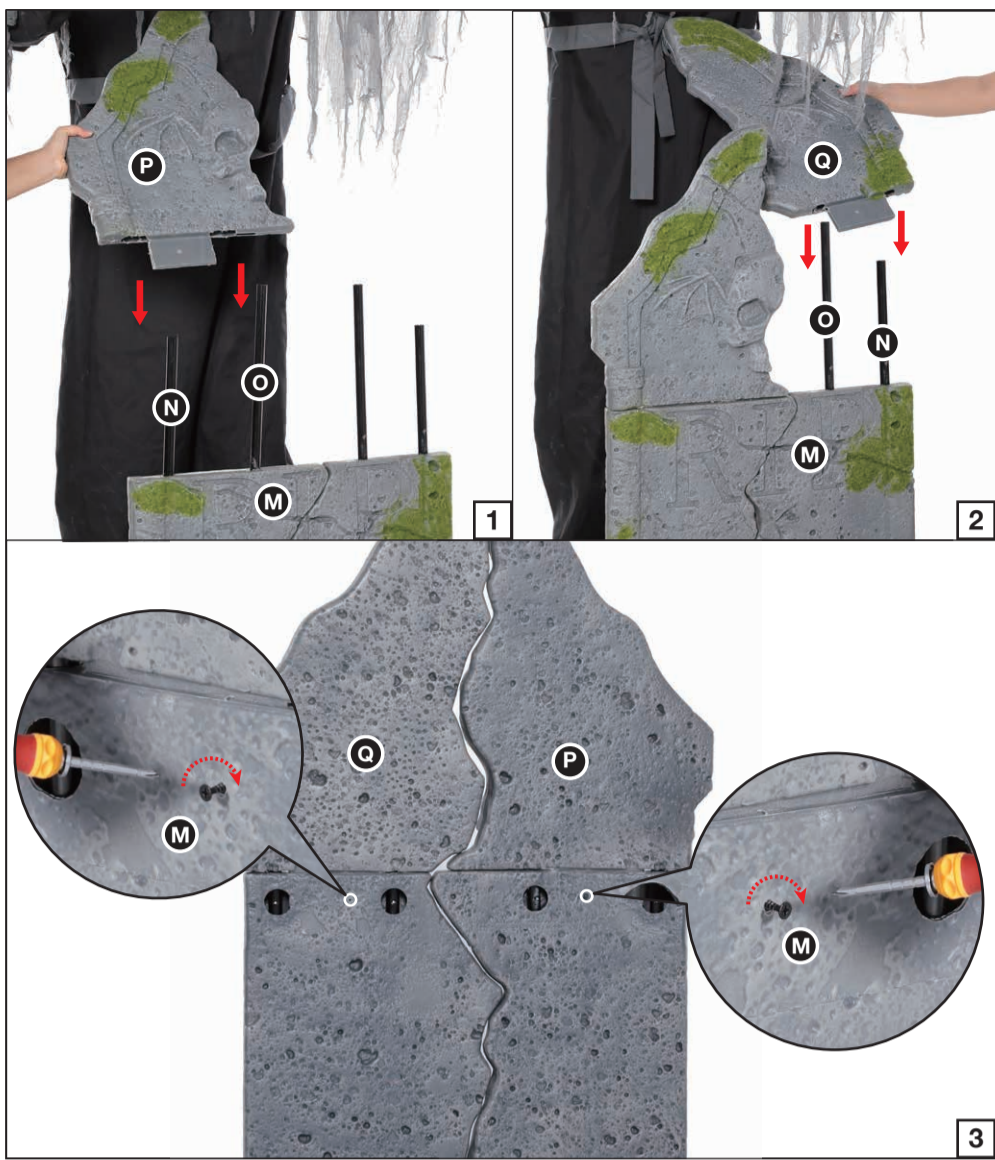
STEP 5

Slide the (I) Right Arm up the right sleeve of the (E) Costume as shown in Figure 1. Then set the forked hook of the (I) Right Arm into the housing available on the right side of the (G) Body Frame as shown in Figure 2. Set the forked hook of the (J) Right Hand and Book into the housing at the end of the (I) Right Arm as shown in Figure 3. Connect the cables from the (I) Right Arm and (J) Right Hand and Book as shown in Figure 4. Then attach the right sleeve of the (E) Costume to the (J) Right Hand and Book using the hook and loop closure as shown in Figure 5.



STEP 6

Slide the forked hook of the (K) Back Frame into the housing at the back of the (G) Body Frame as shown in Figure 1. Then slide the forked hook of the (L) Head into the housing at the top of the (G) Body Frame as shown in Figure 2. Slide the prongs of the (M) Lower Tombstone into the housings at the front of the (A) Base as shown in Figure 3. Connect the (N) Short Poles to the outer poles on the (M) Lower Tombstone and connect the (O) Long Poles to the inner poles on the (M) Lower Tombstone using the quick connect push buttons and pre-drilled holes as shown in Figure 4.



STEP 7

Lower the housings of the (P) Upper Right Tombstone over the (N, O) Poles on the right until it sets down onto the (M) Lower Tombstone as shown in Figure 1. Lower the housings of the (Q) Upper Left Tombstone over the (N, O) Poles on the left until it sets down onto the (M) Lower Tombstone as shown in Figure 2.

Insert and rotate the available screws clockwise into the holes at the back of the (M) Lower Tombstone as shown in Figure 3.



STEP 8

Connect the cables from the Function Control Box in the (G) Body Frame to their corresponding cables by shape and color as shown in Figure 1. Close the back of the (E) Costume using the hook and loop closures as shown in Figure 2. Attach the hood of the (E) Costume to the (L) Head using the hook and loop closure as shown in Figure 3.

Optional: If the user wants to use a Fog Machine with the item, insert the (R) Fog Hose into the hole at the back of the (M) Lower Tombstone as shown in Figure 4.



SENSOR HERE
Be sure nothing is blocking the sensor.

STEP 9

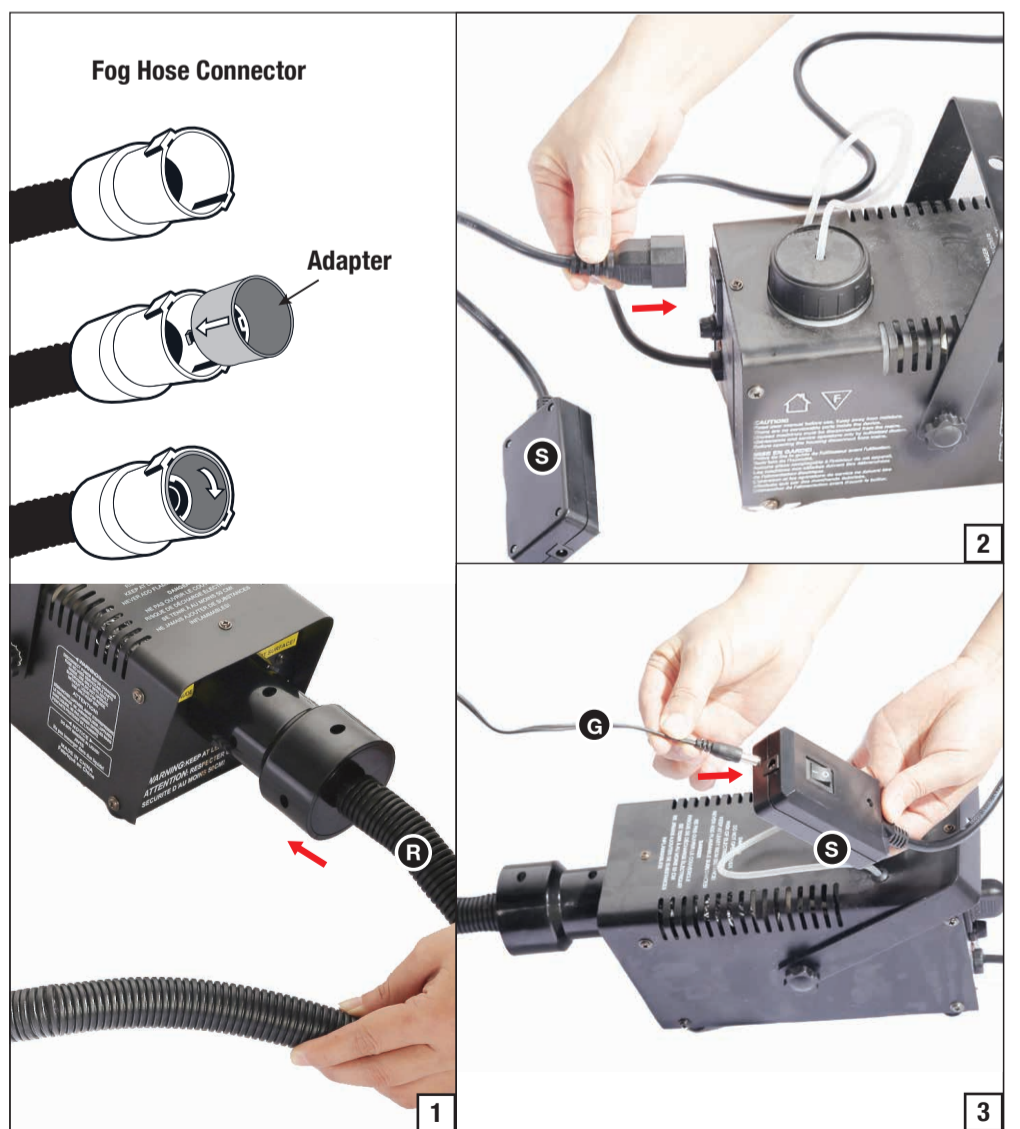
Your Soul Stealer is now fully assembled, plug in and turn on to let the fun begin!

STEP 10

Optional: Attach your (R) Fog Hose to the Fog Machine. If the (R) Fog Hose does not fit, either add or remove the Adapter inside of the Fog Hose Connector. Insert and twist to place inside, twist and pull to remove as shown in Figure 1.

Connect the (S) Fog Machine Adapter to the Fog Machine (Not included) as shown in Figure 2.


Connect the black cable from the Function Control Box to the (S) Fog Machine Adapter as shown in Figure 3.



OPERATION INSTRUCTIONS:

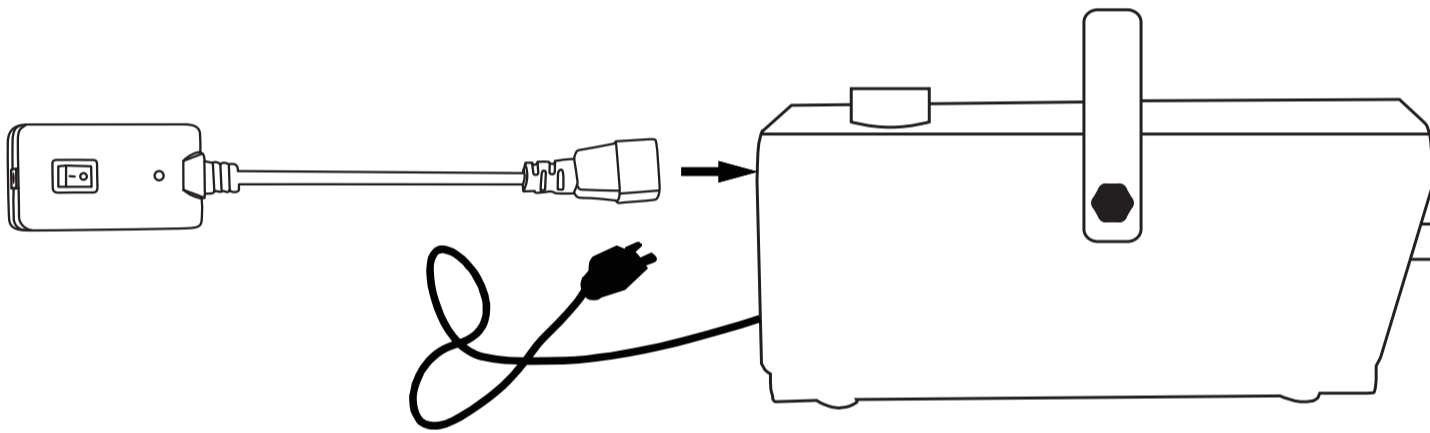
1. Plug the power adapter into a standard power outlet and adjust the settings on the Function Control Box, located on the (G) Body Frame, as desired.

2. Settings:

Sensor /Détecteur	This switch mode will activate lights, sound, and animation when the Infra-red (IR) sensor is activated and will operate for 1 audio-cycle with each activation. The Infra-red (IR) sensor has a range of up to 2 m/6.5 ft. and will activate when someone comes within an 80-degree angle from left-to-right, as well as from above and below.
○	This switch mode allows the item to be activated only if triggered by using a Step Here Try Me Activation Pad (Included). The item will operate for one audio cycle with each Try Me activation.
I	This switch mode will continually operate the lights, sound, and animation of the item.
	Raise or lower the volume using the volume control turn dial, turn all the way down to turn the volume off .

FOG MACHINE ADAPTER INSTRUCTION:

- Use the (S) Fog Machine Adapter only with SVI 400 Watt Fog Machine (Not Included).
- Connect the 3-prong plug of the (S) Fog Machine Adapter into the jack at the back of the Fog Machine.
- Connect the power cord of the Fog Machine into a power outlet.
- Turn the power switch of the Fog Machine to the "ON" position.
- After the Fog Machine warms up (approx. 5 minutes), the light on the (S) Fog Machine Adapter will turn on.
- Press the "ON" switch, The fog machine will be ready to produce fog.
- Press the "OFF" switch, the fog machine will produce fog only when the witch activates.
- Be sure to follow all safety precautions included with the Fog Machine during operation.



IMPORTANT SAFETY INSTRUCTIONS

Read Fog Machine instructions located in Fog Machine seperated carton before operating.

Open the package and check for obvious damage during shipping. If found, discontinue use and contact the distributor.

This device complies with Part 15 of the FCC Rules. Operation is subject to the following two conditions: (1) This device may not cause harmful interference, and (2) this device must accept any interference received, including interference that may cause undesired operation.

CAUTION: Changes or modifications not expressly approved by the party responsible for compliance could void the user's authority to operate the equipment.

NOTE: This equipment has been tested and found to comply with the limits for a Class B digital device, pursuant to Part 15 of the FCC Rules. These limits are designed to provide reasonable protection against harmful interference in a residential installation. This equipment generates, uses and can radiate radio frequency energy and, if not installed and used in accordance with the instructions, may cause harmful interference to radio communications. However, there is no guarantee that interference will not occur in a particular installation. If this equipment does cause harmful interference to radio or television reception, which can be determined by turning the equipment off and on, the user is encouraged to try to correct the interference by one or more of the following measures: Reorient or relocate the receiving antenna, Increase the separation between the equipment and receiver, Connect the equipment into an outlet on a circuit different from that to which the receiver is connected. Consult the dealer or experienced radio/TV technician for help.

